



1. Sketching on paper



2. Quick colour sketching in Photoshop, Large colour areas, searching moods.



3- Switch to Painter, using Basic Round-brush, defining skintones, overall view, expressions.



4. More colouring in Painter. Using brushes like Spattery airbrush and basic round. Idea? Still absolutely no clue. Maybe this could be a horror-pic?



5. Finally some light at the end of the tunnel, I see an emotion! Maybe this is going to be a love-affair after all..?



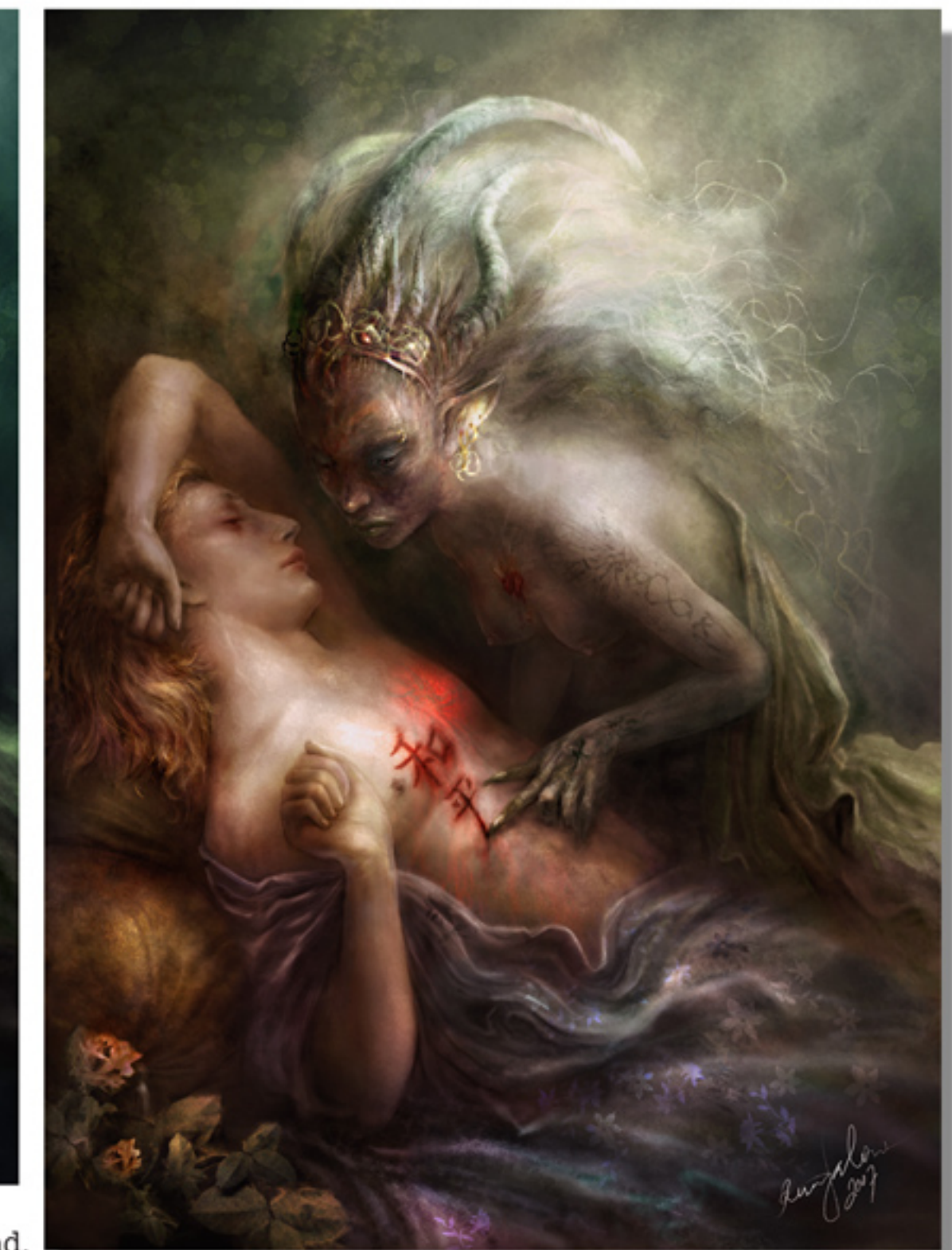
6. Still not switching back to PS. Still using the same brushes, added extra sunlight with Glow-brush and some small textures in the back with airbrushes. Also started to use Add grain at this point to give it more depth and bring out surface.



7. ok, Back to Photoshop to ponder about lighting and colours. I figured this looks too grey and lame when all's too soft and skincoloured. Also the woman seemed too plain to be left like that. So i worked her some more.



8. What happened to perspective? Simply changed my mind. two profiles don't look so good in this situation. Also wanted to make it more expressive by making her more than just a woman, more like a shaman over him.



9. Finishing details and a lot of grain-usage in Painter and a couple of days thinking refines the idea and finishes the piece. Ok, the starting point was the same: it is about love in a way!